
Database Structure EurActive Roofer

Users manual

Education code 7Y104

D.D. Bolier
0529636

Project speculator:
Ir. E. M.C.J. Quanjel

*Eindhoven University of Technology,,
Faculty of Building and Architecture*

13-06-'06

Introduction

This users manual was written as a part of the 'Database Structure Euractive roofer' project. The main target of this project was to develop a useful structure to order information on active roofing. People with different professions should be able to use this structure to gain relevant information on all aspects of active roofing. The information in this structure should be easy accessible trough the internet. A website should guide its users in there search for information from a database. This users manual explains how, and in what ways, the website can be us to find in an efficient way all you want to know -and more- on Active roofing.

Notice that the website is only a DEMO-version, which means not all functions will work properly yet.

Target groups

The website can be used by anyone interested in finding information on active roofing. The database contains information on roof applications like ventilation and energy systems, assembly systems for roof applications and safety supplies as well as design principles and safety regulation. Choosing your profession will influent the order in which the search criteria are to be displayed, adjusted to the main focus as assumed for your profession. In this DEMO-version only the professions 'Architect' and 'Roofer' are included. Choose the profession you are most related with for optimal result, or choose another profession to compare different focuses on active roofing.

How to search

1. To search in the *Euractive roofer-database* you type the web address in your internet browser. Make sure you have a valid internet connection. Version 2.0 DEMO is located on the following address:

<http://sts.bwk.tue.nl/activeroof/>

Press the 'Enter' button to display the homepage of the *Euractive roofer website* (Image 01). If you frequently use the website its recommendable to add the website address to 'Favorites'.

2. Select a profession. Every profession represents a different point of view according to active roofing. For example: To find a very specific system the profession 'Roofer' is most effective. If you like to compare different options you better use the 'Architect' profession.

3. After you have selected a profession, press the '*new search*'-button. This will display the first page with main search criteria.

4. Type a search name. This name can be anything you want, and is mend to identify your search results.

5. Type some additional notes (optional). These notes will be displayed on the search results-page, directly after your search name.

6. Select language. The website will be available in multiple languages. By selecting another language, the site will be translated into the selected language. Version 2.0 DEMO is only available in English.

7. Select included countries. By selecting a country, all information specific for that country will be included in the search results (if relevant). Examples of information specific for a country are regulation and best-practice examples. If a country is not selected, no best-practice projects will be displayed for this country.

8. Select included regulation. If you are not interested in regulation on building physics or safety regulations you can deselect them. These regulations will then not be shown in any search result.

9. Select kind of roof work you want information on. The options are: Assembly, Inspection, Maintenance and Replacement.

10. If you made proper selections on this page, press the *next*-button to continue.



Image 01

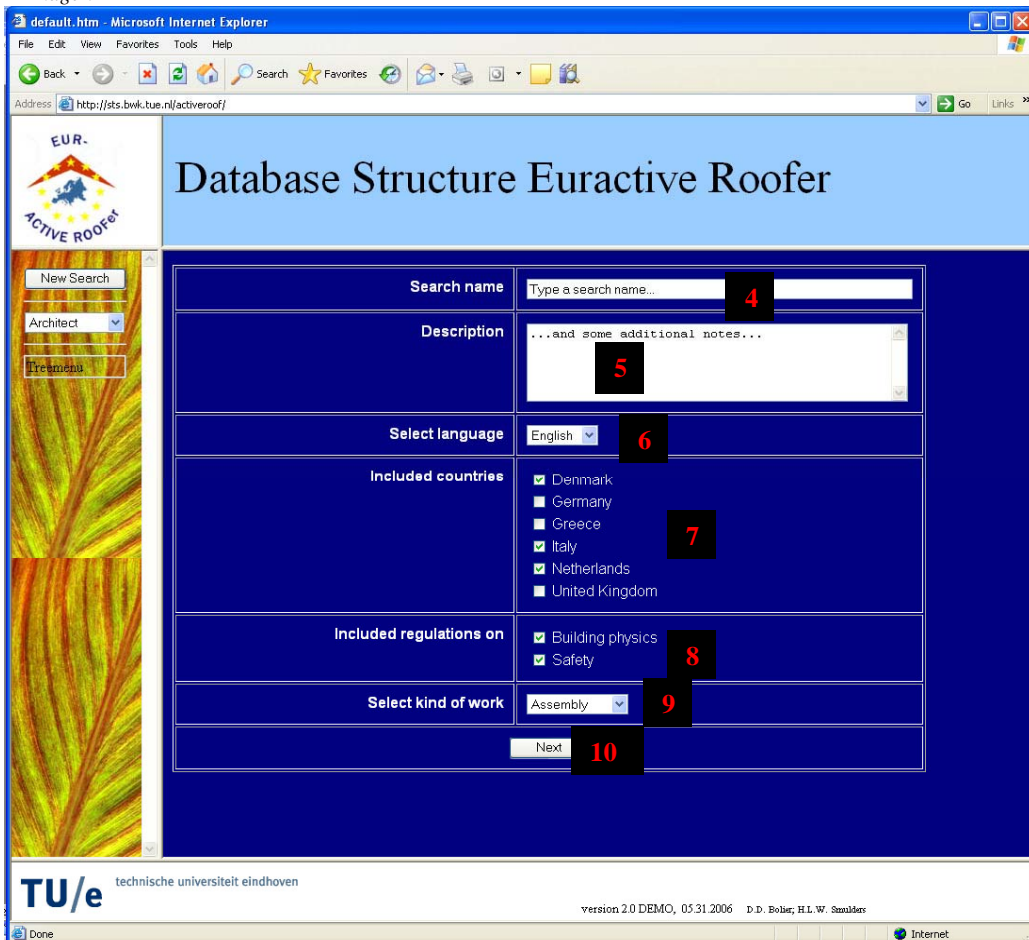


Image 02

11. Depending on the selected profession the next page will be displayed to specify your search criteria. Select the specification you want to search on and press the *next*-button. By pressing the *previous*-button, the previous page will be displayed. Pressing the *first*-button will return you to the first page. In both cases the selected options will be saved: If you want to chance just one selection, you don't have to reselect the other specifications.

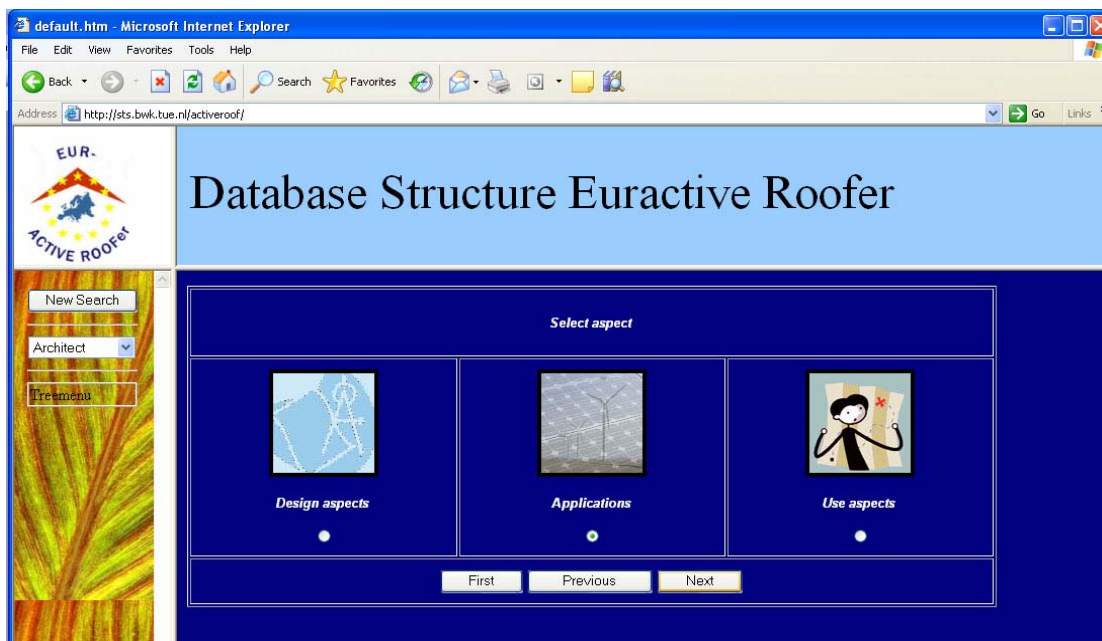


Image 03

12. After making the necessary selections, press the *search*-button on the last page. Search results will be displayed in a new window. In this window, all active roof systems or regulations that fit within your search criteria and are included in the database will be summarized by titles. Selecting a title will link to a system page (on which a specific system is defined (Image 04)) or to a regulation page (on which regulations are explained).

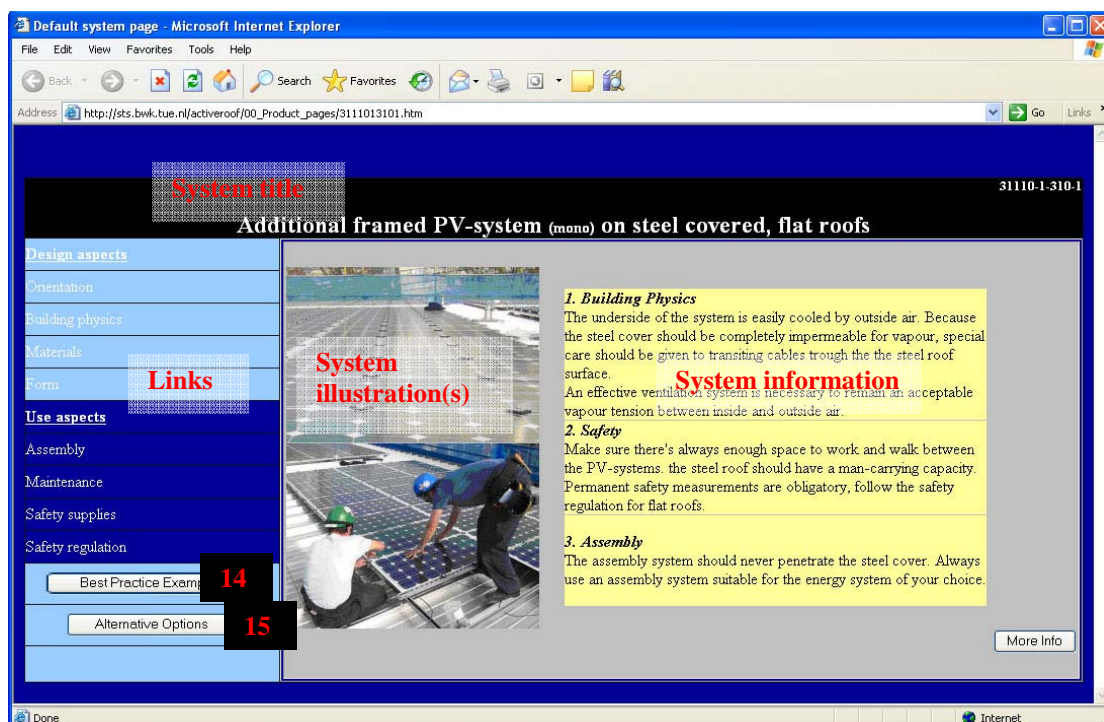


Image 04

13. The system page shows an existing roof system. Each system is a unique combination of a roof application, a roof cover material, an assembly location and a roof type. The system title describes this unique combination. The system is shortly explained by the chosen aspects (8 and 9). The system will be illustrated by one or two pictures. On the left side links are included to find related or explicit information of the system. Example: Clicking on *Building Physics* will link to a location on the website where the physical principle is explained used for the found system. Clicking on *Assembly* will show the assembly system as used for the found system. This assembly system can probably be used for other applications as well, which can be found through this page. Clicking on *Safety regulations* displays a list of safety regulations related to the found system (for the selected countries in 7).

14. Select the *Best Practice Examples*-button to open a new window in which example projects using the specific system are summed up, sorted by country (as selected in 7). Each project description is illustrated by a little image of the project. Select a project to download all available product information (PDF-format).

15. Select the *Alternative Options*-button to search for systems closely related to the selected system: No more than one value (of the variables Roof application, Cover material, Assembly location and Roof type) will differ from the found system.